

PLAN NOTES:

- 1 SEE CIVIL SITE PLAN FOR CONTINUATION OF 4" SANITARY SEWER MAIN.
- 2 2" WASTE FROM 2ND LEVEL, DOWN IN WALL THRU SLAB.
- 3 3" WASTE FROM 2ND LEVEL, DOWN IN WALL THRU SLAB.
- 4 3" VENT UP IN WALL ABOVE. SEE SHEET P-3 FOR CONTINUATION OF 3" VENT IN WALL ABOVE.
- 5 SEE CIVIL SITE PLAN FOR CONTINUATION OF ROOF DRAIN PIPING UNDERGROUND CONNECTING TO STORM SEWER SYSTEM.
- 6 3" ROOF DRAIN AND 3" ROOF OVERFLOW DRAIN UP IN WALL ABOVE. SEE SHEET P-3 FOR CONTINUATION OF PIPING.
- 7 RUN ROOF DRAIN PIPING AS HIGH AS POSSIBLE IN TRUSS SPACE TO AVOID CONFLICT WITH MECHANICAL DUCTWORK.

LICENSED ARCHITECT
AR-2650
MARLA R. MORGAN
STATE OF IDAHO



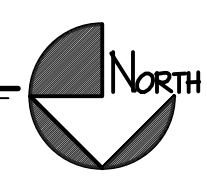
MARLA MORGAN, Architect
Ph: 208.270.2244
E-MAIL: morganimr@cobleone.net

OWNER: **Dr. Deirdre Conway**
IDAHO FERTILITY CENTER
535 West Sunnyside Road Idaho Falls, ID 83402

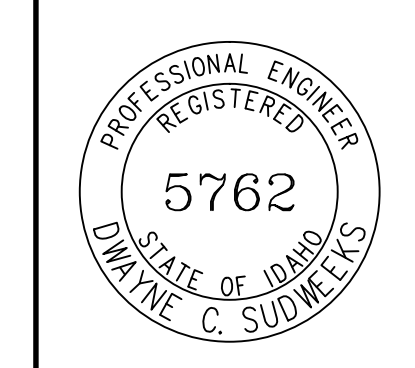
SHEET CONTENTS
FIRST FLOOR WASTE AND VENT PIPING PLAN

PLUMBING LEGEND	
SYMBOL	DESCRIPTION
V	VENT
VTR	VENT THRU ROOF
CO	CLEANOUT
WCO	WALL CLEANOUT
COTG	CLEANOUT TO GRADE
—	PIPE DROP
—	PIPE RISE
⊘	BALL TYPE ISOLATION VALVE
—	SOIL OR WASTE PIPING
—	VENT LINE PIPING
—	DOMESTIC COLD WATER PIPING
—	DOMESTIC HOT WATER PIPING
—	HOT WATER RECIRC. PIPING
—	GAS PIPING
—	CONDENSATE DRAIN PIPING
—	ROOF DRAIN PIPING
—	ROOF OVERFLOW DRAIN PIPING

FIRST FLOOR WASTE & VENT PIPING PLAN
SCALE: 1/4" = 1'-0"



ORIGINAL DRAWING SIGNED BY: DWAYNE C. SUDWEEKS
DATE ORIGINAL SIGNED: FEB. 26, 2019
ORIGINAL ON FILE AT ENGINEERED SYSTEMS ASSOCIATES
1355 EAST CENTER, POCATELLO, IDAHO 83201



Engineered Systems Associates
1355 EAST CENTER
POCATELLO, IDAHO 83201
PHONE: (208) 233-0501
FAX: (208) 233-0529
EMAIL: eso@engsystems.com
ESA JOB NUMBER: 18097

REVISIONS	DATE	DESCRIPTION

SHEET NUMBER
P-1 OF 4

